



## 1014 SERIES CRANE BORER

Premier Proline Pty Ltd is an Australian owned company that has been supplying equipment to the electricity industry throughout Australia for over 50 years. Over this time Proline has gained a reputation for producing reliable, high quality plant for both electrical authorities and private contractors.

The 1014 Series Crane Borer is designed and manufactured in accordance with Australian Standards AS1418 & AS2550. The machine caters to the need for a crane and pendulum borer to lift and place large timber or concrete poles as commonly used in the industry today.



rear mount



front mount



cabin rear mount

### CRANE SPECIFICATIONS

5t Max Load (single fall)	10t Max Load (double fall)
360° Continuous Slew	Single Luffing Cylinder
Max Boom Angle 72°	Minimum Boom Angle -15°
Forward or Rear Mount Configuration	Nominal Hook Height 14m
2 Stage Sequential Boom (max reach 12.2m)	x4 Hydraulic Outriggers (max spread 4.88m)

### BORER SPECIFICATIONS

Variable Two-speed Borer	Max Torque 15000Nm
Low Speed 20 rpm	High Speed 40 rpm
Boring radius 4.43 to 7.78m	Boring depth without extensions 3.1m
Max Boring Diameter 1050mm (earth)	Max Boring Diameter 750mm (hard rock)

### STANDARD EQUIPMENT

- Lightweight Alloy Jib
- Hydraulic Pole Grips
- Digital Load Monitoring
- Out & Down Jacks (762mm travel)
- Operators Station Outrigger Controls
- Variable Speed Winch (max 5t line pull)
- Low Pressure Hydraulic Joystick Control
- Oil Cooler
- Non-Rotating Wire Rope (Ø16mm/43m)
- 200 Litre Hydraulic Reservoir
- Emergency DC Power Supply
- Variable Displacement Piston Pump



**Premier Proline Pty Ltd.**  
68 Audley Street, Woodville North, South Australia 5012  
tel + 61 8 8347 1700 fax + 61 8 8244 8531  
proline@hydroil.com.au www.premierproline.com.au



**Australian Made for Australian Industry**



## 1014 SERIES CRANE BORER

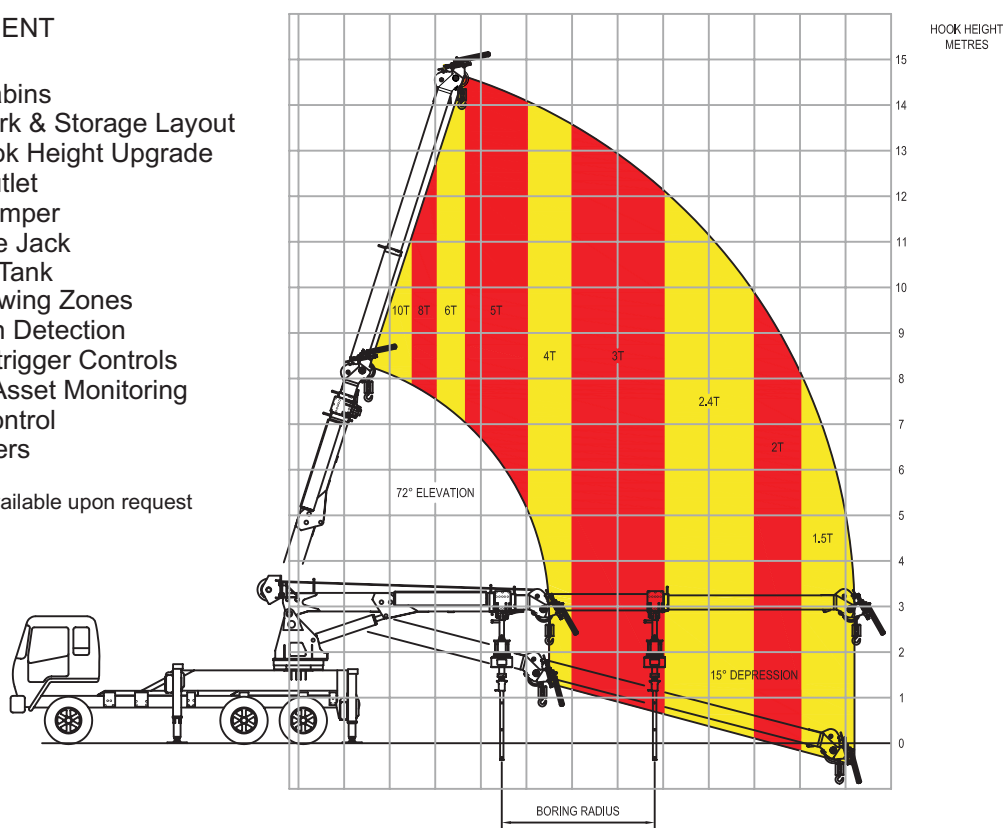


OUTREACH METRES  
CENTRE OF SLEW

### OPTIONAL EQUIPMENT

- Airconditioned Cabins
- Custom Body Work & Storage Layout
- 15m Nominal Hook Height Upgrade
- Hydraulic Tool Outlet
- Hydraulic Pole Tamper
- 20t Hydraulic Pole Jack
- Integrated Water Tank
- Sectionalized Slewing Zones
- Outrigger Position Detection
- Ground Level Outrigger Controls
- Cellular Remote Asset Monitoring
- Radio Remote Control
- Various Size Augers

\* additional options available upon request



### SERVICE & SUPPORT

Every Proline machine is backed by the experience and design expertise gained in over 50 years of product research and development. Our cranes are continuously developed to include new technology and meet the changing demands of our industry.

Proline's Certified Repairer Network consists of only the most reputable repairers who meet Proline's high standards for inspection, maintenance and repair of our products. Certified Repairers are located in most Australian States and Territories.



**Premier Proline Pty Ltd.**  
68 Audley Street, Woodville North, South Australia 5012  
tel + 61 8 8347 1700 fax + 61 8 8244 8531  
proline@hydroil.com.au www.premierproline.com.au

**Australian Made for Australian Industry**