

**PROLINE**

**LIFT  
SERIES**

# PL8Z

**FEATURE PACKED AND FULLY COMPLIANT**

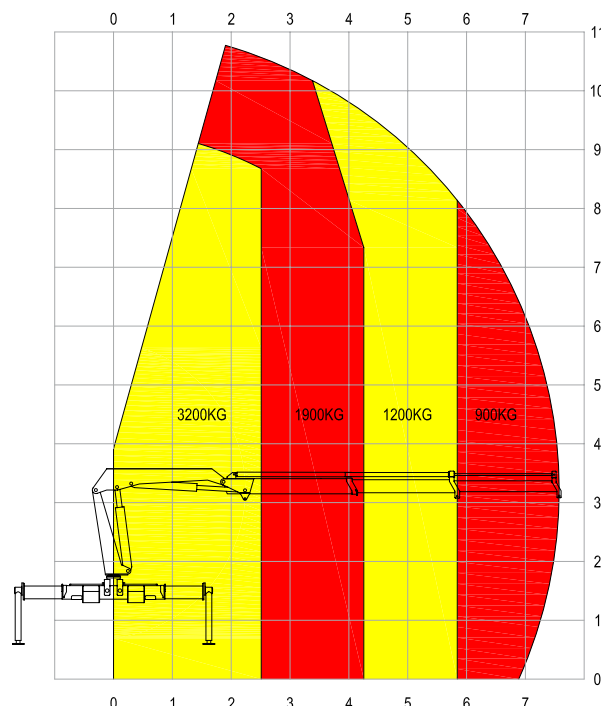
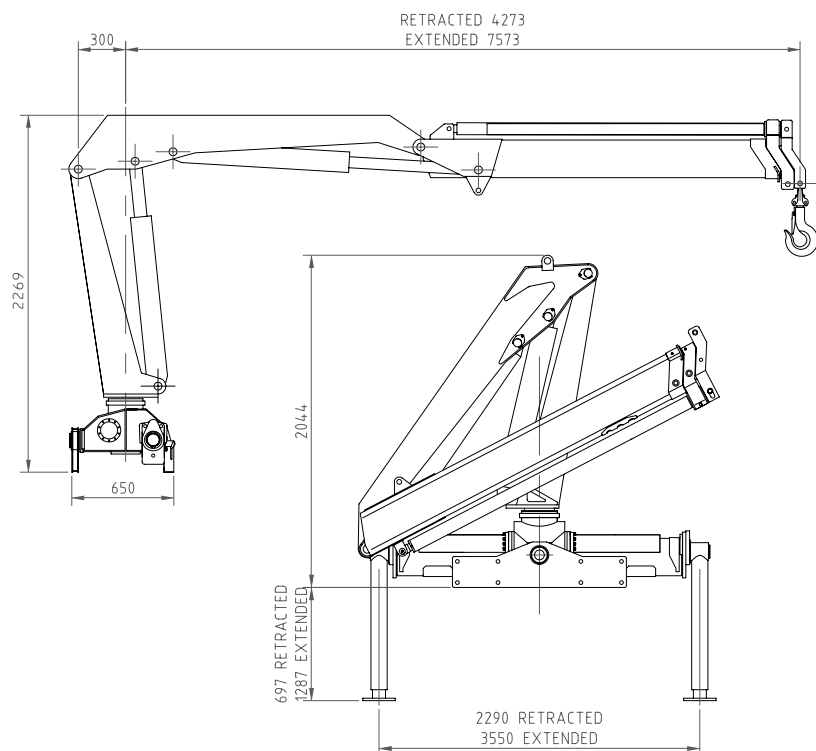


**The PL8ZA is a light duty knuckle boom crane providing a solid combination of capacity and reach to suit a range of lifting applications. As evident throughout the entire Proline LIFT Series range, operator safety remains our focus with all of the features found on our larger capacity machines retained on the PL8ZA.**

- Compliant with AS1418.1, 1418.11 & 2550.11
- Fully Hydraulic Operation
- Proportional Crane Functions
- Independent Function Motion Cut
- Radio Remote Control as Standard
- Integrated Load Management System
- Operator Slew Protection
- External Warning Lights & Sounder
- Travel/Stow Warning System.



# PL8Z TECHNICAL SPECIFICATIONS



Smooth, seamless, multi-function operation of the crane is made possible using our four paddle (16 function) radio remote control supplied **standard** with all Proline LIFT Series models.

Radio remote control is a safety feature on any VLC offering the operator freedom of movement and an unobstructed view of the load and potential hazards at all times.

The unit is ergonomically designed for sustained use and gives the operator full radio remote control of stabilizers and proportional speed control of all crane functions.

Max Lifting Capacity	<b>3200Kg</b>	Oil Tank Capacity	<b>60L</b>
Max Lifting Moment	<b>8.0t/m</b>	Slew Rotation Angle	<b>400°</b>
Recommended Power	<b>15kW</b>	Operational Weight	<b>1320Kg</b>
Recommended Hydraulic flow	<b>25L/min</b>	Installation Space	<b>850mm</b>
Rated Hydraulic Pressure	<b>28 MPa</b>	Power Supply	<b>12V</b>



**Premier Proline Pty Ltd.**

68 Audley Street, Woodville North, South Australia 5012  
 tel + 61 8 8347 1700 fax + 61 8 8244 8531  
 proline@hydroil.com.au www.premierproline.com.au

**Australian Made for Australian Industry**