

PROLINE

**LIFT
SERIES**

PL6Z

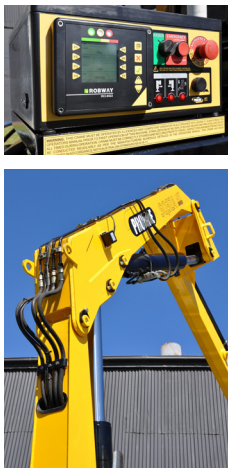
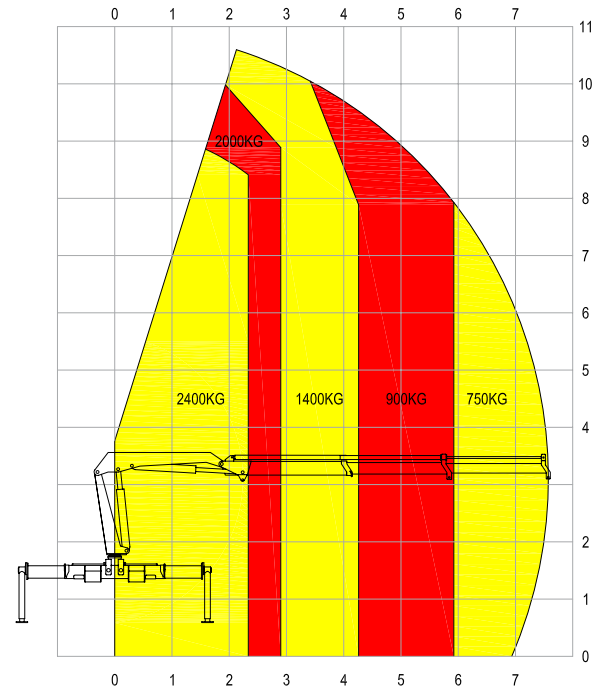
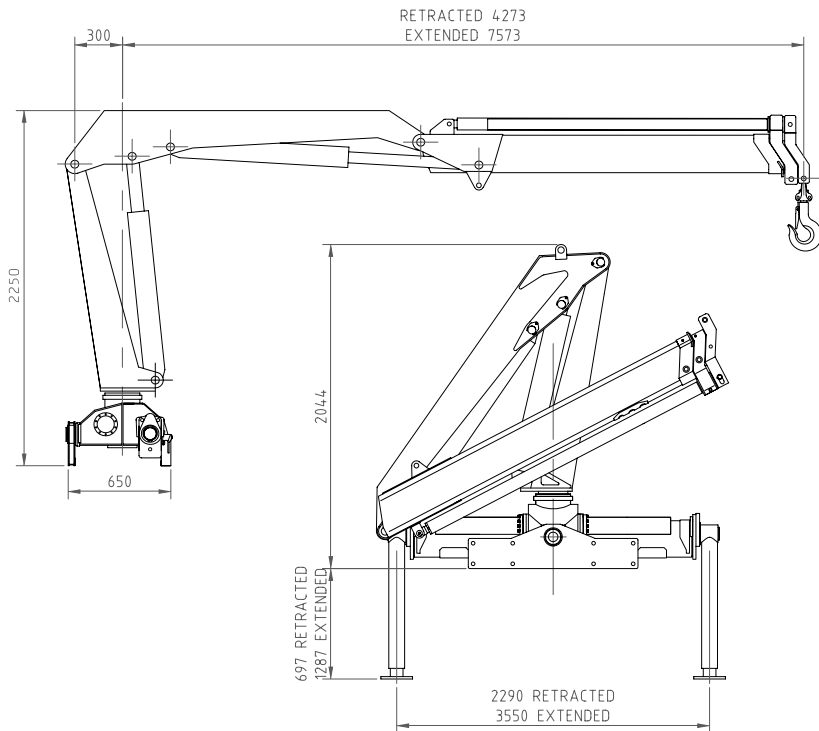
FEATURE PACKED AND FULLY COMPLIANT



The PL6Z is a light capacity knuckle boom crane and the smallest machine in Proline's LIFT Series range. Though smaller in size the PL6Z retains all the safety features found in our larger models. The entire LIFT Series range has been designed and manufactured with operator safety our prime focus. It is this mindset that has set the foundation for many of the unique innovations incorporated as standard into our machines.

- Compliant with AS1418.1, 1418.11 & 2550.11
- Fully Hydraulic Operation
- Proportional Crane Functions
- Independent Function Motion Cut
- Radio Remote Control as Standard
- Integrated Load Management System
- Operator Slew Protection
- External Warning Lights & Sounder
- Travel/Stow Warning System.

PL6Z TECHNICAL SPECIFICATIONS



Smooth, seamless, multi-function operation of the crane is made possible using our four paddle (16 function) radio remote control supplied **standard** with all Proline LIFT Series models.

Radio remote control is a safety feature on any VLC offering the operator freedom of movement and an unobstructed view of the load and potential hazards at all times.

The unit is ergonomically designed for sustained use and gives the operator full radio remote control of stabilizers and proportional speed control of all crane functions.

Max Lifting Capacity	2400Kg	Oil Tank Capacity	60L
Max Lifting Moment	5.8t/m	Slew Rotation Angle	400°
Recommended Power	15kW	Operational Weight	1150Kg
Recommended Hydraulic flow	25L/min	Installation Space	850mm
Rated Hydraulic Pressure	28 MPa	Power Supply	12V