

**PROLINE**

**LIFT  
SERIES**

# PL12Z

FEATURE PACKED AND FULLY COMPLIANT



**The PL12Z is a mid range capacity knuckle boom crane and the first release in Premier Proline's new LIFT Series.**

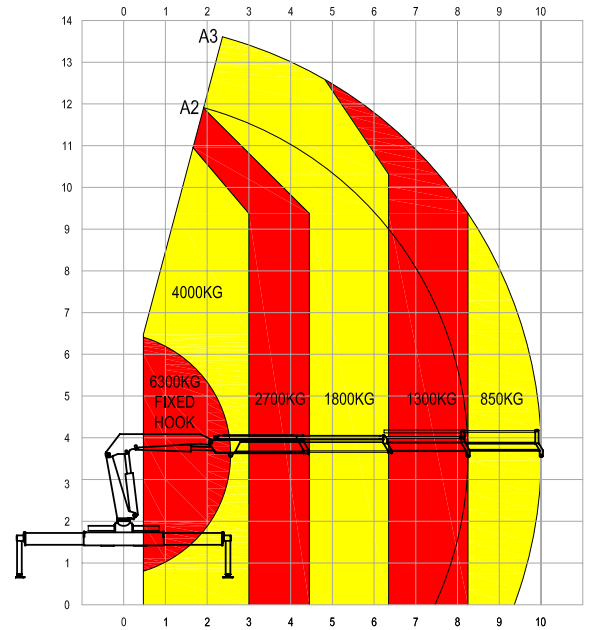
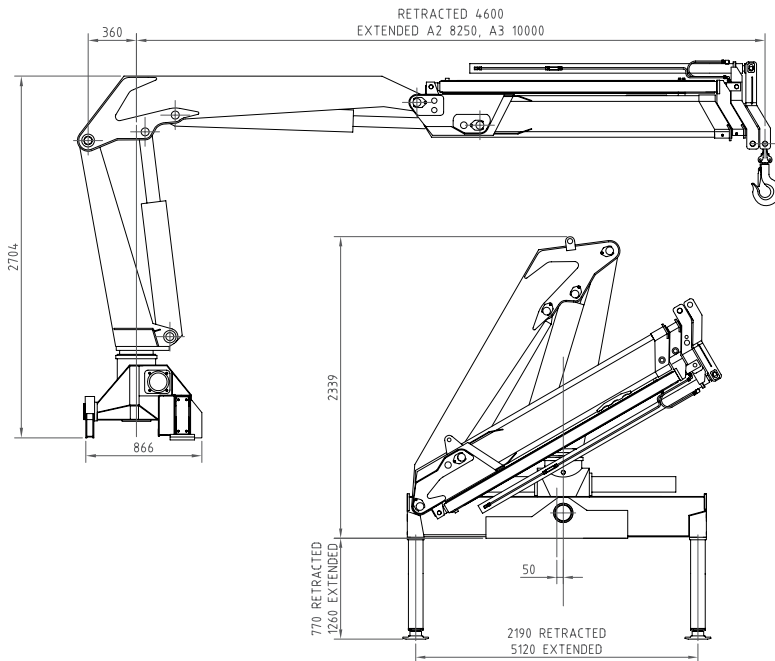
**The LIFT Series has been designed and manufactured with operator safety our prime focus. It is this mind set that has laid the foundation for many of the unique features incorporated as standard into our machines.**

- Compliant with AS1418.1, 1418.11 & 2550.11
- Fully Hydraulic Operation
- Proportional Crane Functions
- Independent Function Motion Cut
- Radio Remote Control as Standard
- Integrated Load Management System
- Operator Slew Protection
- External Warning Lights & Sounder
- Travel/Stow Warning System.



# PL12Z TECHNICAL SPECIFICATIONS

**A2:** 2 boom hydraulic extension. Max 1300kg @ 8.2metres **A3:** 3 boom hydraulic extension. Max 850kg @ 10metres



Smooth, seamless, multi-function operation of the crane is made possible using our four paddle (16 function) radio remote control supplied **standard** with all Proline LIFT Series models.

Radio remote control is a safety feature on any VLC offering the operator freedom of movement and an unobstructed view of the load and potential hazards at all times.

The unit is ergonomically designed for sustained use and gives the operator full radio remote control of stabilizers and proportional speed control of all crane functions.

Max Lifting Capacity	<b>6300Kg</b>	Oil Tank Capacity	<b>100L</b>
Max Lifting Moment	<b>12.6t/m</b>	Slew Rotation Angle	<b>400°</b>
Recommended Power	<b>30kW</b>	Operational Weight	<b>2200Kg</b>
Recommended Hydraulic flow	<b>40L/min</b>	Installation Space	<b>1070mm</b>
Rated Hydraulic Pressure	<b>28 MPa</b>	Power Supply	<b>12V</b>



**Premier Proline Pty Ltd.**

68 Audley Street, Woodville North, South Australia 5012  
tel + 61 8 8347 1700 fax + 61 8 8244 8531  
proline@hydroil.com.au www.premierproline.com.au

**Australian Made for Australian Industry**