

PROLINE

**LIFT
SERIES**

SQ8Z

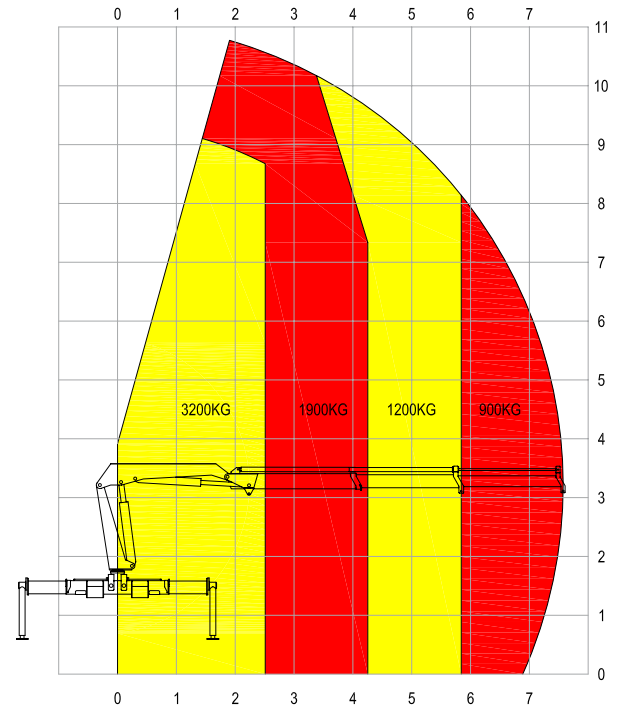
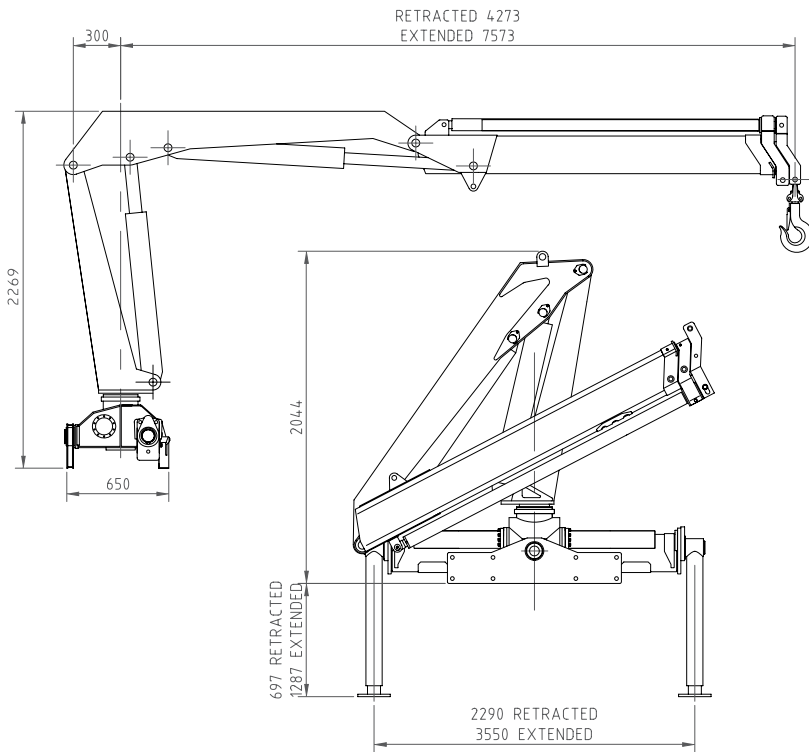
FEATURE PACKED AND FULLY COMPLIANT



The SQ8ZA is a light duty knuckle boom crane providing a solid combination of capacity and reach to suit a range of lifting applications. As evident throughout the entire Proline LIFT Series range, operator safety remains our focus with all of the features found on our larger capacity machines retained on the SQ8ZA.

- Compliant with AS1418.1, 1418.11 & 2550.11
- Fully Hydraulic Operation
- Proportional Crane Functions
- Independent Function Motion Cut
- Radio Remote Control as Standard
- Integrated Load Management System
- Operator Slew Protection
- External Warning Lights & Sounder
- Travel/Stow Warning System.

SQ8Z TECHNICAL SPECIFICATIONS



Smooth, seamless, multi-function operation of the crane is made possible using our four paddle (16 function) radio remote control supplied **standard** with all Proline LIFT Series models.

Radio remote control is a safety feature on any VLC offering the operator freedom of movement and an unobstructed view of the load and potential hazards at all times.

The unit is ergonomically designed for sustained use and gives the operator full radio remote control of stabilizers and proportional speed control of all crane functions.

Max Lifting Capacity	3200Kg	Oil Tank Capacity	60L
Max Lifting Moment	8.0t/m	Slew Rotation Angle	400°
Recommended Power	15kW	Operational Weight	1320Kg
Recommended Hydraulic flow	25L/min	Installation Space	850mm
Rated Hydraulic Pressure	28 MPa	Power Supply	12V



Premier Proline Pty Ltd.

68 Audley Street, Woodville North, South Australia 5012
 tel + 61 8 8347 1700 fax + 61 8 8244 8531
 proline@hydroil.com.au www.premierproline.com.au

Australian Made for Australian Industry