

PROLINE**LIFT
SERIES**

SQ6.3Z

FEATURE PACKED AND FULLY COMPLIANT

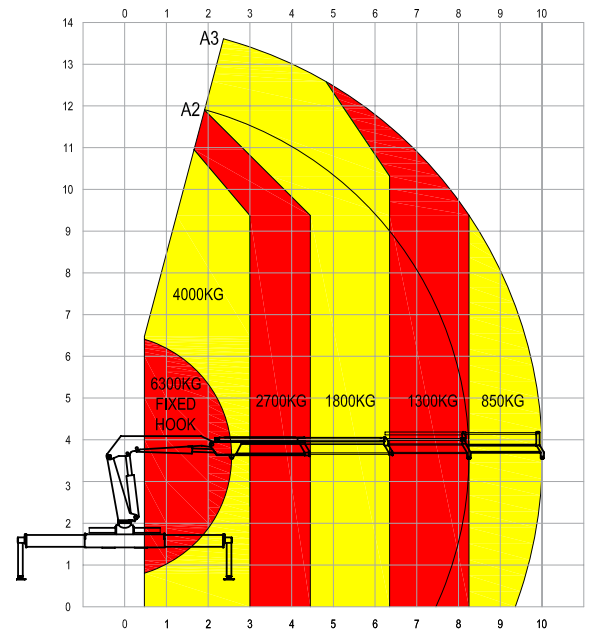
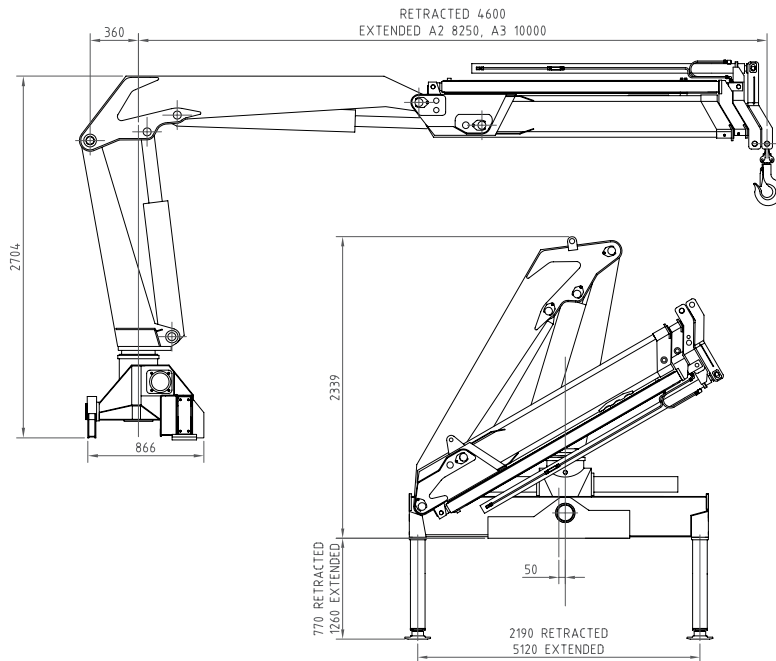


The SQ6.3Z is a mid range capacity knuckle boom crane and the first release in Premier Proline's new LIFT Series. The LIFT Series has been designed and manufactured with operator safety our prime focus. It is this mind set that has laid the foundation for many of the unique features incorporated as standard into our machines.

- Compliant with AS1418.1, 1418.11 & 2550.11
- Fully Hydraulic Operation
- Proportional Crane Functions
- Independent Function Motion Cut
- Radio Remote Control as Standard
- Integrated Load Management System
- Operator Slew Protection
- External Warning Lights & Sounder
- Travel/Stow Warning System.

SQ6.3Z TECHNICAL SPECIFICATIONS

A2: 2 boom hydraulic extension. Max 1300kg @ 8.2metres **A3:** 3 boom hydraulic extension. Max 850kg @ 10metres



Smooth, seamless, multi -function operation of the crane is made possible using our four paddle (16 function) radio remote control supplied **standard** with all Proline LIFT Series models.

Radio remote control is a safety feature on any VLC offering the operator freedom of movement and an unobstructed view of the load and any potential hazards at all times.

The unit is ergonomically designed for sustained use and gives the operator full radio remote control of stabilizers and proportional speed control of all crane functions.

Max Lifting Capacity	6300Kg	Oil Tank Capacity	100L
Max Lifting Moment	12.6t/m	Slew Rotation Angle	400°
Recommended Power	30kW	Operational Weight	2200Kg
Recommended Hydraulic flow	40L/min	Installation Space	1070mm
Rated Hydraulic Pressure	28 MPa	Power Supply	12V

Premier Proline Pty Ltd.

68 Audley Street, Woodville North, South Australia 5012
 tel + 61 8 8347 1700 fax + 61 8 8244 8531
 proline@hydroil.com.au www.premierproline.com.au



Australian Made for Australian Industry